

## 2006 Census Profile

# Langley, DM

A District Municipality located in Greater Vancouver

Geographic Classification  
5915001

For a map, browse to

[www.bcstats.gov.bc.ca/data/pop/maps/rdmap.htm](http://www.bcstats.gov.bc.ca/data/pop/maps/rdmap.htm)

### Data Quality for the Profiled Area

Data quality flag for this area is 01010:



**100% Data Quality Flag (100% sample)**

Data quality index showing, for the short census questionnaire (100% data), a global non-response rate higher than or equal to 5% but lower than 10%.  
Does not apply to the population and dwelling counts.



**20% Data Quality Flag (20% sample)**

Data quality index showing, for the long questionnaire (20% sample data), a global non-response rate higher than or equal to 5% but lower than 10%.  
Does not apply to the population and dwelling counts.

### More Information

Our own website contains sections devoted to census and regional statistics.

[www.bcstats.gov.bc.ca/census.asp](http://www.bcstats.gov.bc.ca/census.asp)  
[www.bcstats.gov.bc.ca/regions.asp](http://www.bcstats.gov.bc.ca/regions.asp)

Statistics Canada offers community profiles.

<http://www12.statcan.ca/english/census06/data/profiles/community/Index.cfm?Lang=E> [continued]

The British Columbia Ministry of Agriculture, Food and Fisheries offers extensive statistics, for example:  
<http://www.agf.gov.bc.ca/stats/>

Indian and Northern Affairs Canada has a growing statistics site.

[www.inac.gc.ca/pr/sts/index\\_e.html](http://www.inac.gc.ca/pr/sts/index_e.html)

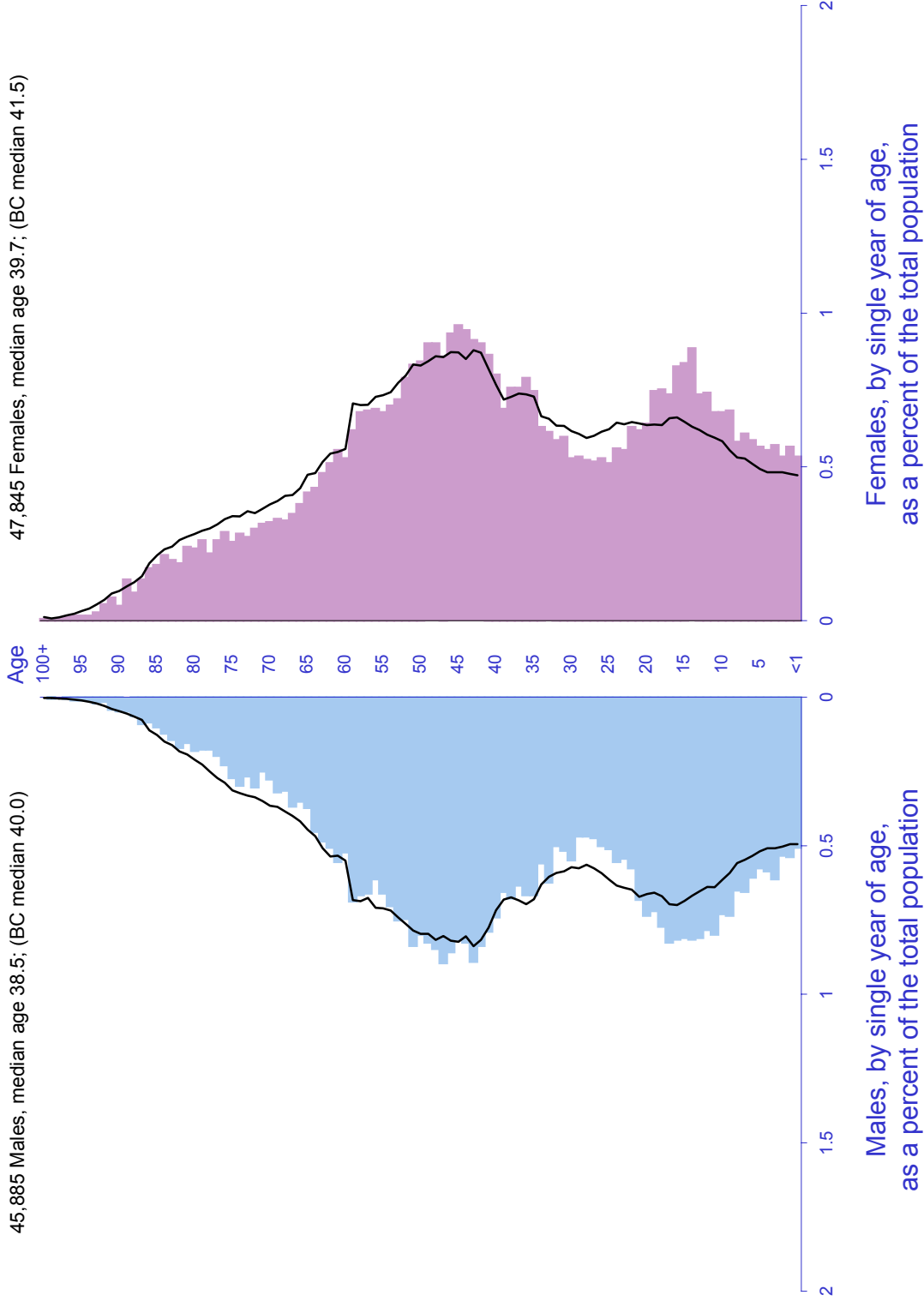
If you require further assistance please contact:

Data Services, BC Stats  
Telephone (250) 387-0327

FAX (250) 387-0329  
Email [BC.Stats@gov.bc.ca](mailto:BC.Stats@gov.bc.ca)  
Location 1st Floor, 553 Superior Street, Victoria  
Mail Box 9410, Stn Prov Govt, Victoria, BC V8W9V1

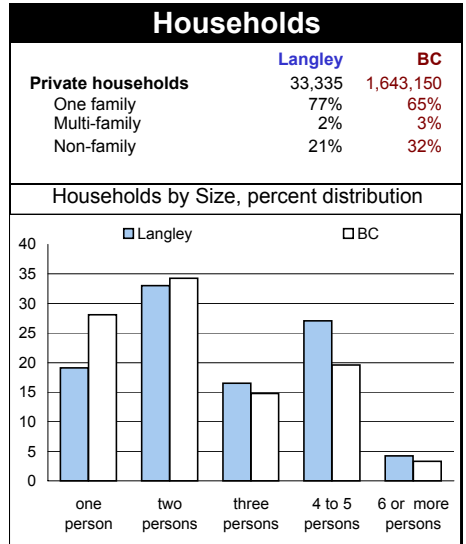
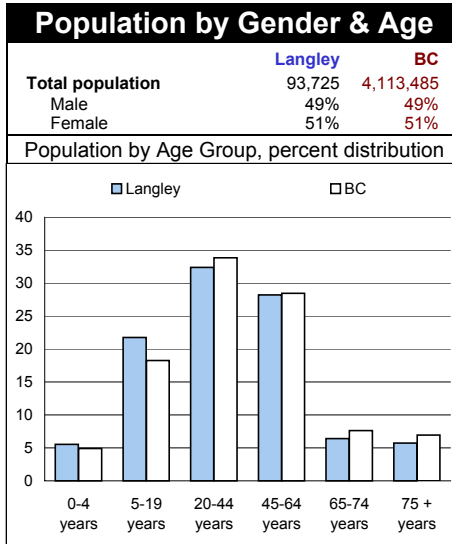
This document is one in a series of over 1,700 that cover a wide range geographic areas including Canada, the provinces and territories, Federal Electoral Districts, and the following in British Columbia: Census Sub-Divisions, Census Metropolitan Areas, Census Agglomerations, Census Tracts, and Designated Places.

## Age pyramid of Langley, DM compared to British Columbia (line)



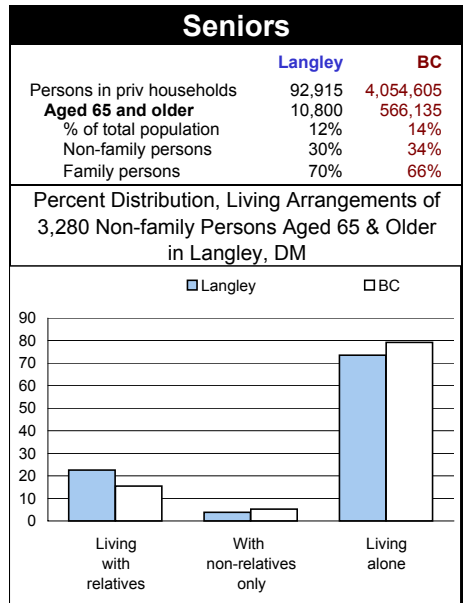
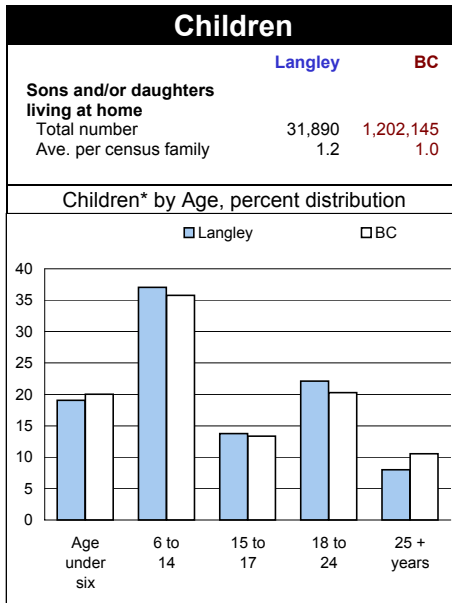
Subject Area	Compared to
Langley, DM	British Columbia
<b>DM</b>	<b>BC</b>
Geocode	<b>59</b>
Population (unrounded data)	<b>4,113,487</b>
Population (single year of age data)	<b>4,113,485</b>
Median Age	<b>40.8</b>
<b>39.1</b>	
Age Cohorts % (5-year cohort data)	
0-19	<b>27.3</b>
20-29	<b>11.1</b>
30-44	<b>21.2</b>
45-64	<b>28.2</b>
65+	<b>12.1</b>
75+	<b>5.7</b>
	<b>7.0</b>

Summary			
	Langley	BC	
<b>Total population</b> (as of May 16, 2006)	93,726	4,113,487	
Share of Regional District	4.4%	-	
<b>2001 Census Population</b> (as of May 15, 2001)	86,896	3,907,738	
Percent change '01-2006	7.9%	5.3%	
<b>Land area 2006</b>			
km <sup>2</sup>	306.93		
km <sup>2</sup>		924,815	
<b>Occupied private dwellings</b> (unrounded)	33,320	1,642,715	
<b>Total dwellings</b> (unrounded)	35,098	1,788,474	

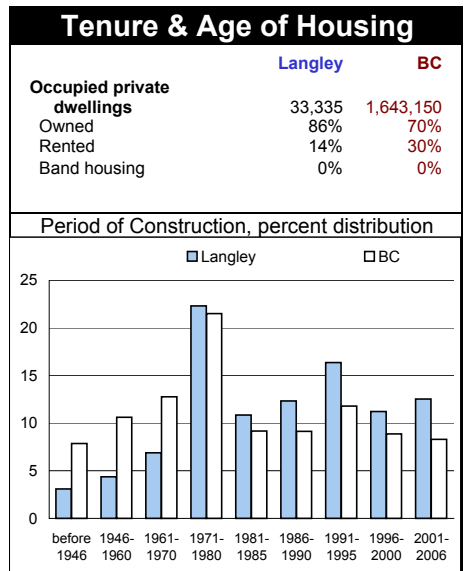
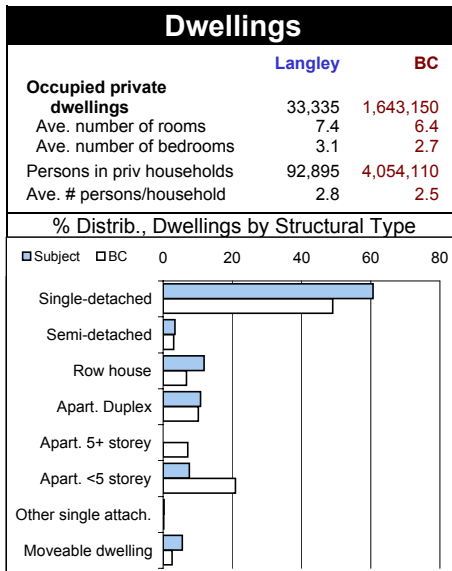


Marital Status & Families			
	Langley	BC	
<b>Population 15+ years</b>	75,520	3,433,880	
Single, never married	28%	32%	
Legally married	56%	50%	
Separated	3%	3%	
Divorced	7%	8%	
Widowed	5%	6%	
<b>Census Families by Structure</b>			
<b>Number, census families</b>	26,975	1,161,420	
<b>Husband-wife families</b>	23,615	986,255	
Now-married couples	21,020	844,430	
Without child* at home	41%	46%	
With children* at home	59%	54%	
<b>Common-law couples</b>	2,595	141,825	
Without child* at home	57%	65%	
With children* at home	43%	35%	
<b>Single-parent families</b>	3,360	175,165	
Male parent	22%	20%	
Female parent	78%	80%	

child\*/children\* - defined as sons and/or daughters at home



Affordability (not available yet)			
	Langley	BC	
<b>Average value of owner-occupied private dwellings</b>			
<b>Occupied dwellings</b>			
Regular maintenance			
Require minor repairs			
Require major repairs			
<b>Tenant households, non-farm, non-reserve, private dwellings</b>			
Average gross rent			
Gross rent spending 30% or more of hh income on shelter			
Gross rent 30 to 99%			
<b>Owner households, non-farm, non-reserve, private dwellings</b>			
Average owner's major payments			
Owners major payments spending 30% or more of hh income on shelter			
Payments 30 to 99%			



Data presented in this report are subject to suppression and random rounding in order to preserve the confidentiality of respondents to the census. The effect is significant in areas with little population or where a particular category drew few responses.

The census is a rich source of demographic data for even small communities, at five year intervals. The information presented here is drawn from a large dataset. Other variables are available by request on a fee for service basis.

## Population and dwellings

		BC			BC
<b>Population, 2006 - unrounded data</b>	93,726	4,113,487	<b>Area, square kilometres</b>	306.9257	924,815.4344
Population, 2001 - (2006 boundaries)	86,896	3,907,738	Population per sqare km.	305.4	4.4
Population percentage change, 2001-2006	7.9%	5.3%			
<b>Occupied private dwellings (households)</b>	33,320	1,642,715			
Total private dwellings (incl. seasonal, etc.)	35,098	1,788,474			

## Age and sex

	Both Sexes			Male			Female		
			BC			BC			BC
<b>Total - Age</b>	93,725	100.0%	100.0%	45,885	100.0%	100.0%	47,845	100.0%	100.0%
0 to 4 years	5,185	5.5%	4.9%	2,605	5.7%	5.1%	2,580	5.4%	4.7%
5 to 9 years	5,855	6.2%	5.4%	3,025	6.6%	5.6%	2,830	5.9%	5.1%
10 to 14 years	7,170	7.7%	6.2%	3,690	8.0%	6.6%	3,485	7.3%	5.9%
15 to 19 years	7,360	7.9%	6.7%	3,705	8.1%	7.0%	3,655	7.6%	6.3%
20 to 24 years	5,720	6.1%	6.5%	2,900	6.3%	6.7%	2,820	5.9%	6.3%
25 to 29 years	4,725	5.0%	6.0%	2,280	5.0%	6.0%	2,450	5.1%	6.0%
30 to 34 years	5,340	5.7%	6.2%	2,575	5.6%	6.1%	2,770	5.8%	6.3%
35 to 39 years	6,590	7.0%	7.1%	3,090	6.7%	7.0%	3,500	7.3%	7.1%
40 to 44 years	7,985	8.5%	8.1%	3,835	8.4%	8.1%	4,150	8.7%	8.2%
45 to 49 years	8,240	8.8%	8.4%	3,975	8.7%	8.3%	4,265	8.9%	8.4%
50 to 54 years	7,240	7.7%	7.8%	3,605	7.9%	7.8%	3,635	7.6%	7.8%
55 to 59 years	6,215	6.6%	7.0%	3,085	6.7%	7.1%	3,135	6.6%	7.0%
60 to 64 years	4,730	5.0%	5.2%	2,370	5.2%	5.3%	2,355	4.9%	5.2%
65 to 69 years	3,290	3.5%	4.1%	1,610	3.5%	4.1%	1,680	3.5%	4.1%
70 to 74 years	2,705	2.9%	3.5%	1,310	2.9%	3.5%	1,395	2.9%	3.5%
75 to 79 years	2,190	2.3%	2.9%	985	2.1%	2.8%	1,210	2.5%	3.1%
80 to 84 years	1,735	1.9%	2.2%	725	1.6%	1.8%	1,010	2.1%	2.5%
85 to 89 years	1,030	1.1%	1.2%	365	0.8%	0.9%	670	1.4%	1.5%
90 to 94 years	335	0.4%	0.5%	130	0.3%	0.3%	205	0.4%	0.7%
95 to 99 years	70	0.1%	0.1%	25	0.1%	0.1%	45	0.1%	0.2%
100 years and over	10	0.0%	0.0%	-	0.0%	0.0%	5	0.0%	0.0%
Median age (half are younger; half older)	39.1		40.8	38.5		40.0	39.7		41.5

## Marital status

(legal marital status)			BC
<b>Total population 15 years and over</b>	75,520	100.0%	100.0%
Never legally married (single)	21,350	28.3%	32.1%
Legally married (and not separated)	42,595	56.4%	50.4%
Separated, but still legally married	2,210	2.9%	3.2%
Divorced	5,575	7.4%	8.3%
Widowed	3,800	5.0%	6.0%

## Common-law status

			BC
<b>Total population 15 years and over</b>	75,520	100.0%	100.0%
Not in a common-law relationship	70,465	93.3%	91.8%
In a common-law relationship	5,050	6.7%	8.2%

## Families

<b>Total Number of Census Families in private households</b>			BC
	26,975		1,161,420

### Children by age

			BC
<b>Children at home in census families</b>	31,890	100.0%	100.0%
Under 6 years of age	6,085	19.1%	20.0%
6-14 years	11,820	37.1%	35.8%
15-17 years	4,380	13.7%	13.3%
18-24 years	7,045	22.1%	20.3%
25 years and over	2,555	8.0%	10.5%
Average number of children at home	1.2		1.0

### Families by size

<b>Census families in private households</b>			BC
<b>Total number of census families</b>	26,975	100.0%	100.0%
2 person census families	11,985	44.4%	50.6%
3 person census families	5,695	21.1%	21.1%
4 person census families	6,260	23.2%	20.0%
5 or more persons cen. families	3,035	11.3%	8.3%

## Families

### by type and presence and number of children

#### (share down)

	Couple families			Married couples			Common-law couples		
			BC			BC			BC
<b>Total</b>	23,615	100.0%	100.0%	21,020	100.0%	100.0%	2,595	100.0%	100.0%
Without children at home	10,000	42.3%	48.6%	8,515	40.5%	45.9%	1,485	57.2%	64.6%
With children at home	13,610	57.6%	51.4%	12,505	59.5%	54.1%	1,105	42.6%	35.4%
1 child	4,630	19.6%	19.8%	4,080	19.4%	20.1%	550	21.2%	17.9%
2 children	5,990	25.4%	22.2%	5,625	26.8%	23.9%	365	14.1%	12.0%
3 or more children	2,985	12.6%	9.4%	2,800	13.3%	10.1%	185	7.1%	5.5%
<b>Lone-parent families</b>	<b>All lone-parents</b>			<b>Male parent</b>			<b>Female parent</b>		
			BC			BC			BC
<b>Total</b>	3,360	100.0%	100.0%	730	100.0%	100.0%	2,630	100.0%	100.0%
1 child	1,980	58.9%	61.9%	475	65.1%	66.9%	1,505	57.2%	60.7%
2 children	1,060	31.5%	28.7%	185	25.3%	25.3%	875	33.3%	29.6%
3 or more children	320	9.5%	9.3%	70	9.6%	7.8%	250	9.5%	9.7%

#### (share across)

	Couple families			Married couples			Common-law couples		
			BC			BC			BC
<b>Total</b>	23,615	100.0%	100.0%	21,020	89.0%	85.6%	2,595	11.0%	14.4%
Without children at home	10,000	100.0%	100.0%	8,515	85.2%	80.9%	1,485	14.9%	19.1%
With children at home	13,610	100.0%	100.0%	12,505	91.9%	90.1%	1,105	8.1%	9.9%
1 child	4,630	100.0%	100.0%	4,080	88.1%	87.0%	550	11.9%	13.0%
2 children	5,990	100.0%	100.0%	5,625	93.9%	92.2%	365	6.1%	7.8%
3 or more children	2,985	100.0%	100.0%	2,800	93.8%	91.6%	185	6.2%	8.4%
<b>Lone-parent families</b>	<b>All lone-parents</b>			<b>Male parent</b>			<b>Female parent</b>		
			BC			BC			BC
<b>Total</b>	3,360	100.0%	100.0%	730	21.7%	20.2%	2,630	78.3%	79.8%
1 child	1,980	100.0%	100.0%	475	24.0%	21.8%	1,505	76.0%	78.2%
2 children	1,060	100.0%	100.0%	185	17.5%	17.8%	875	82.5%	82.2%
3 or more children	320	100.0%	100.0%	70	21.9%	16.8%	250	78.1%	83.2%

## Private households

### by age and living arrangements

#### (share down)

	All persons			Under 65 years of age			Seniors (65 and older)		
			BC			BC			BC
<b>Total persons in private households</b>	92,915	100.0%	100.0%	82,115	100.0%	100.0%	10,800	100.0%	100.0%
Number of persons not in census families	10,440	11.2%	17.4%	7,160	8.7%	14.6%	3,280	30.4%	34.5%
Living with relatives	2,055	2.2%	2.2%	1,315	1.6%	1.7%	740	6.9%	5.3%
Living with non-relatives only	2,020	2.2%	3.8%	1,895	2.3%	4.1%	125	1.2%	1.8%
Living alone	6,360	6.8%	11.4%	3,950	4.8%	8.8%	2,410	22.3%	27.3%
Number of census family persons	82,475	88.8%	82.6%	74,955	91.3%	85.4%	7,520	69.6%	65.5%
Ave. number of persons per census family	3.1		2.9						

#### (share across)

	All persons			Under 65 years of age			Seniors (65 and older)		
			BC			BC			BC
<b>Total persons in private households</b>	92,915	100.0%	100.0%	82,115	88.4%	86.0%	10,800	11.6%	14.0%
Number of persons not in census families	10,440	100.0%	100.0%	7,160	68.6%	72.3%	3,280	31.4%	27.7%
Living with relatives	2,055	100.0%	100.0%	1,315	64.0%	66.6%	740	36.0%	33.4%
Living with non-relatives only	2,020	100.0%	100.0%	1,895	93.8%	93.3%	125	6.2%	6.7%
Living alone	6,360	100.0%	100.0%	3,950	62.1%	66.4%	2,410	37.9%	33.6%
Number of census family persons	82,475	100.0%	100.0%	74,955	90.9%	88.9%	7,520	9.1%	11.1%
Ave. number of persons per census family	3.1		2.9						

### by size

			BC
<b>Total number of private households</b>	33,320	100.0%	100.0%
1 person	6,370	19.1%	28.1%
2 persons	11,010	33.0%	34.2%
3 persons	5,500	16.5%	14.8%
4 to 5 persons	9,020	27.1%	19.6%
6 or more persons	1,415	4.2%	3.3%

### by average number of persons and by type

		BC
<b>Persons in private households</b>	92,895	4,054,110
Ave. # of persons in priv. h'holds	2.8	2.5
<b>Total number of private households</b>	33,335	100.0%
One-family households	25,530	65.4%
Multiple-family households	715	2.5%
Non-family households	7,090	32.1%

## Dwellings

			BC				BC
<b>Number of occupied private dwellings</b>	33,335	100.0%	100.0%	Number of occupied private dwellings	33,335	100.0%	100.0%
Owned	28,675	86.0%	69.7%	Req'ng regular maintenance only	23,735	71.2%	67.7%
Rented	4,660	14.0%	30.1%	Requiring minor repairs	7,855	23.6%	24.9%
Band housing	-	0.0%	0.2%	Requiring major repairs	1,745	5.2%	7.4%
Single-detached house	20,210	60.6%	49.0%	Period of construction, before 1946	1,025	3.1%	7.9%
Semi-detached house	1,125	3.4%	3.1%	Period of construction, 1946 to 1960	1,460	4.4%	10.6%
Row house	3,935	11.8%	6.8%	Period of construction, 1961 to 1970	2,295	6.9%	12.8%
Apartment, duplex	3,605	10.8%	10.2%	Period of construction, 1971 to 1980	7,440	22.3%	21.5%
Apartment, building with 5 or more storeys	-	0.0%	7.2%	Period of construction, 1981 to 1985	3,620	10.9%	9.2%
Apartment, building with under 5 storeys	2,515	7.5%	20.9%	Period of construction, 1986 to 1990	4,110	12.3%	9.1%
Other single-attached house	80	0.2%	0.2%	Period of construction, 1991 to 1995	5,460	16.4%	11.8%
Movable dwelling	1,850	5.5%	2.6%	Period of construction, 1996 to 2000	3,745	11.2%	8.9%
Average number of rooms per dwelling	7.4		6.4	Period of construction, 2001 to 2006	4,180	12.5%	8.3%
Average number of bedrooms per dwelling	3.1		2.7				